

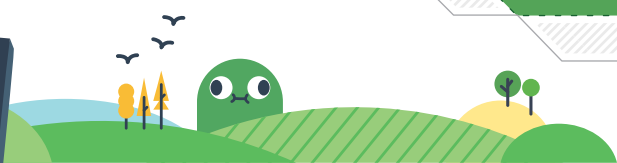
Bergli-Bastelbogen Seite 1/5




Schwierigkeit: ★★★★★

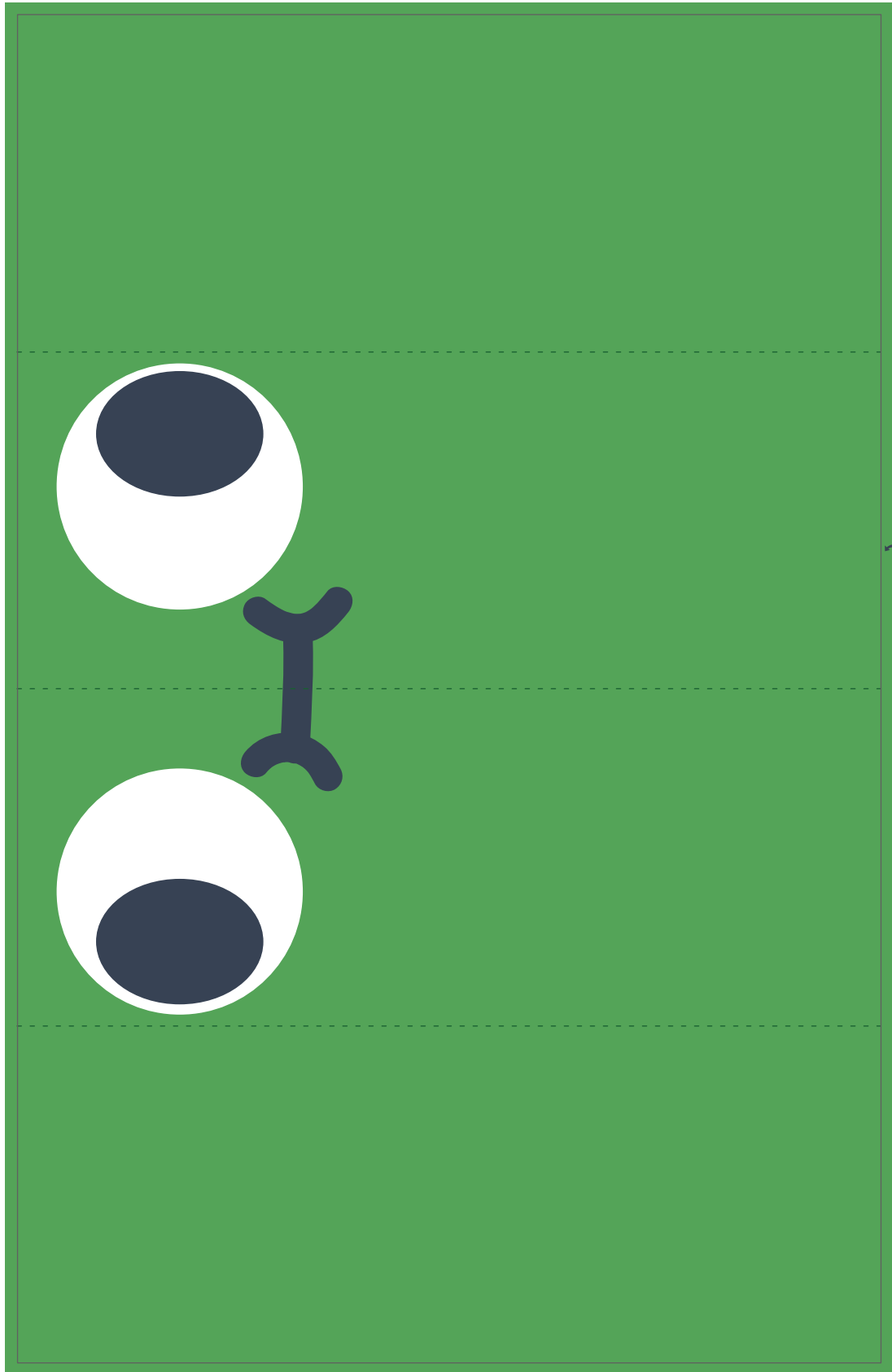
Material: Schere, Leimstift oder Weissleim

Drucke alle fünf Seiten auf A4 oder A3 (falls möglich) aus. Schneide der durchgehenden Linie entlang und falte die gestrichelten Linien. Trage anschliessend Leim auf die Laschen und falte das Bergli zusammen.

Tipp: Verwende dickeres Papier für ein stabileres Bergli.






-  Schneiden
-  Falten
-  Leim auftragen

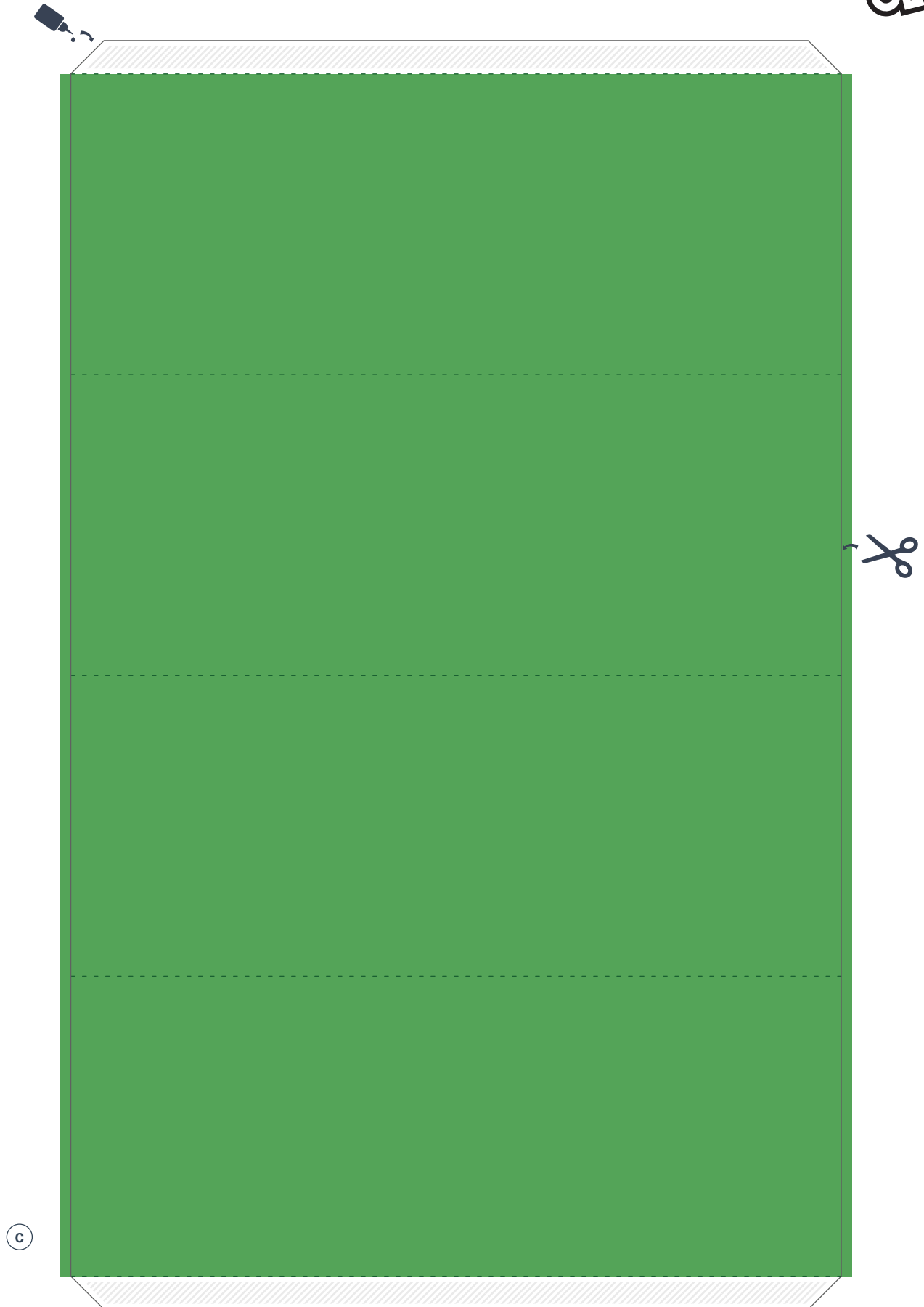


B

© 2023 – Schweizerische Rettungsflugwacht Rega






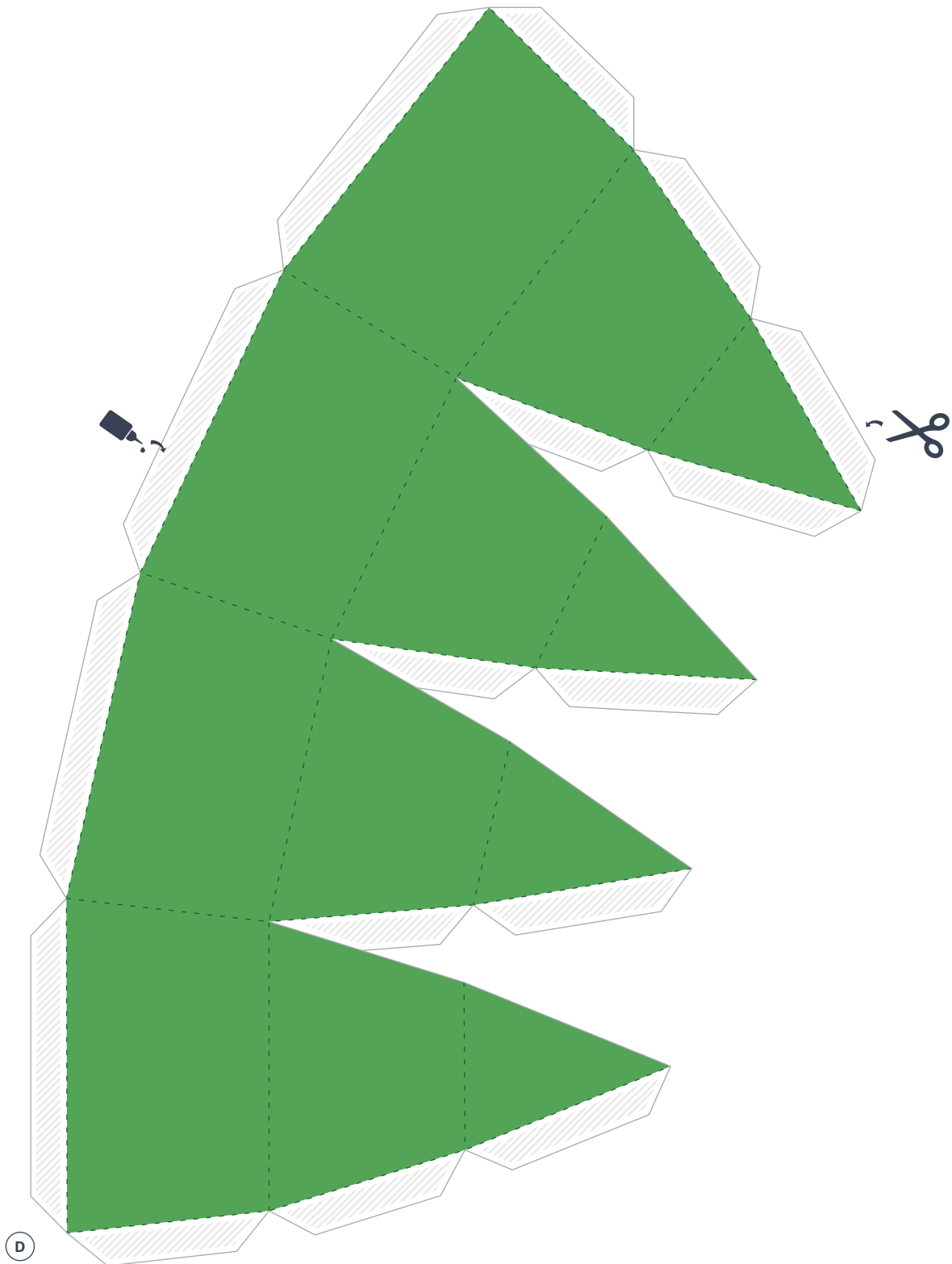
-  Schneiden
-  Falten
-  Leim auftragen



© 2023 – Schweizerische Rettungsflugwacht Rega






-  Schneiden
-  Falten
-  Leim auftragen



© 2023 – Schweizerische Rettungsflugwacht Rega



-  Schneiden
-  Falten
-  Leim auftragen

